

# Animals

## Including Humans





# Animals

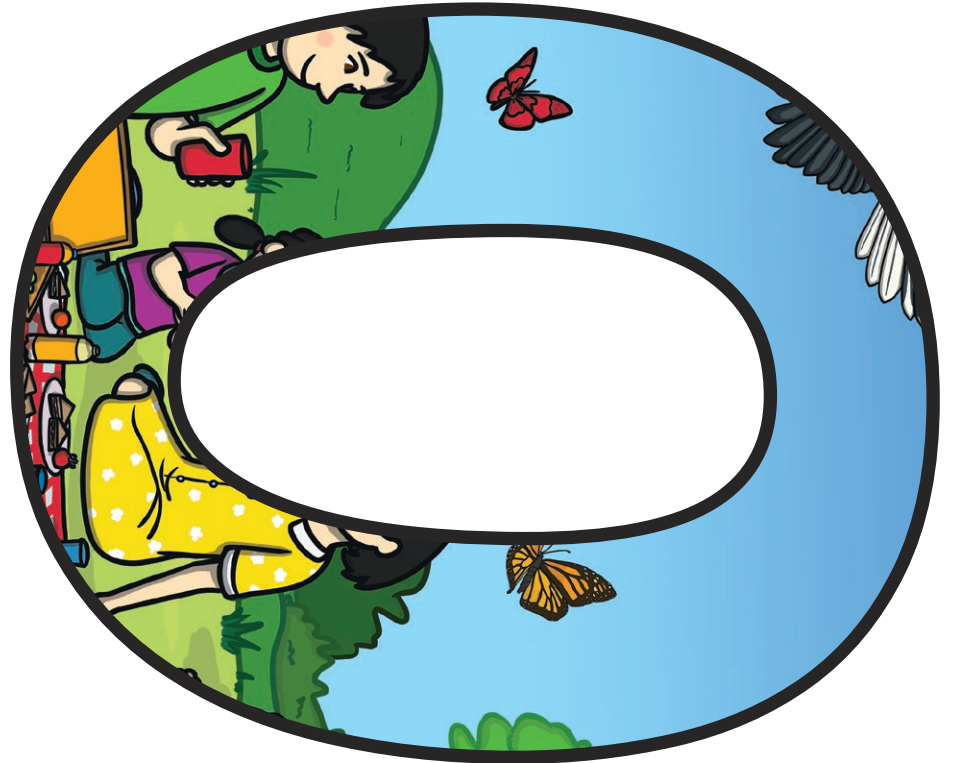


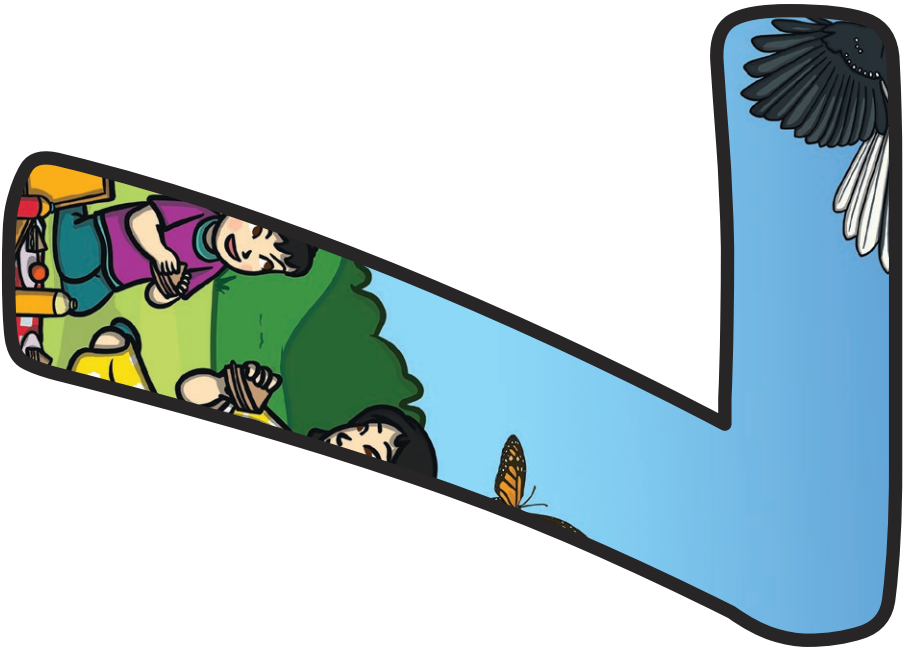
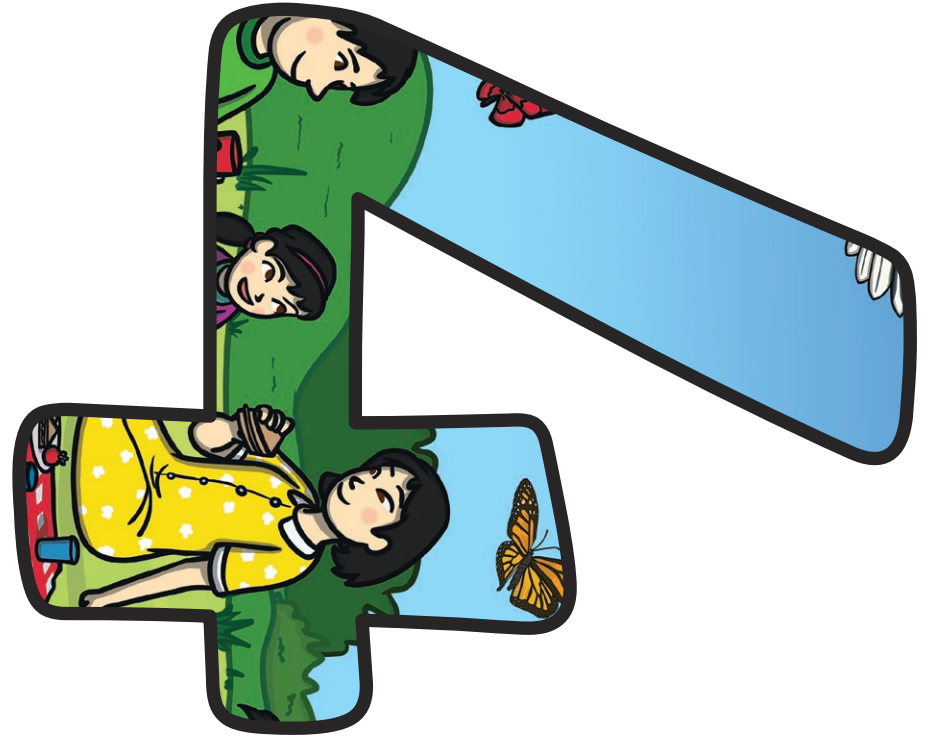
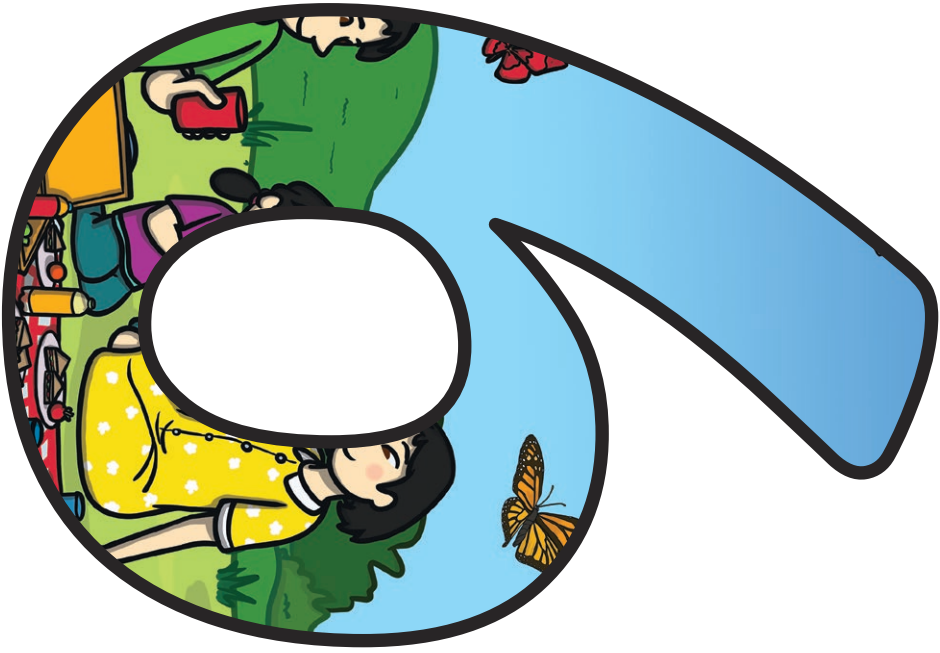
# Including





# Humans









**REGENT STUDIES**

Focused education on life's walk!

[www.regentstudies.com](http://www.regentstudies.com)











**REGENT STUDIES**

Focused education on life's walk!

[www.regentstudies.com](http://www.regentstudies.com)





**REGENT STUDIES**

Focused education on life's walk!

[www.regentstudies.com](http://www.regentstudies.com)





**REGENT STUDIES**

Focused education on life's walk!

[www.regentstudies.com](http://www.regentstudies.com)





**REGENT STUDIES**

Focused education on life's walk!

[www.regentstudies.com](http://www.regentstudies.com)





**REGENT STUDIES**

Focused education on life's walk!

[www.regentstudies.com](http://www.regentstudies.com)







**REGENT STUDIES**

Focused education on life's walk!

[www.regentstudies.com](http://www.regentstudies.com)













**REGENT STUDIES**

Focused education on life's walk!

[www.regentstudies.com](http://www.regentstudies.com)

# Animals Including Humans



**exercise**



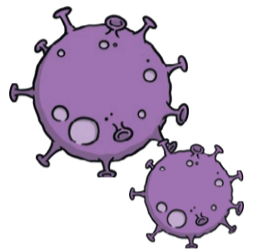
**air**



**water**



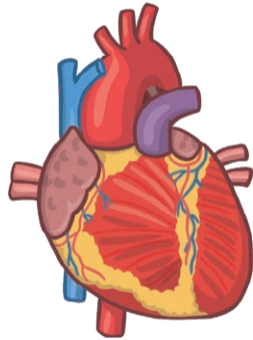
**food**



**germs**



**hygiene**



**heart rate**



**nutrition**



**healthy**

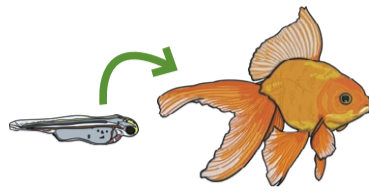




adult



young



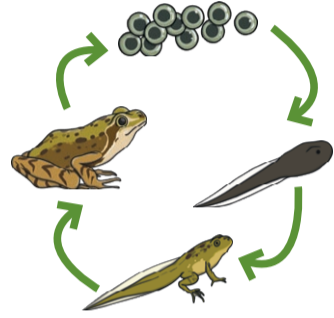
develop



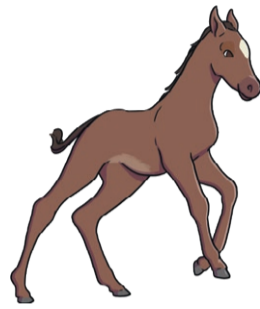
grow



survival



life cycle



live young



offspring



compare

observe

sort



# Animals Including Humans



**exercise**



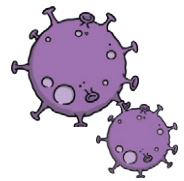
**air**



**water**



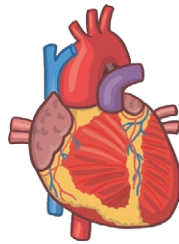
**food**



**germs**



**hygiene**



**heart rate**



**nutrition**



**healthy**



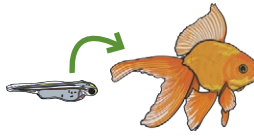
S



adult



young



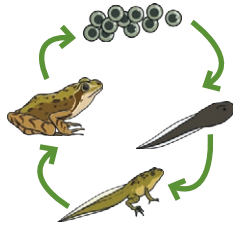
develop



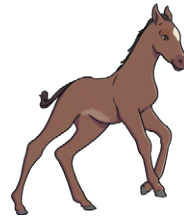
grow



survival



life cycle



live young



offspring



compare

observe

sort



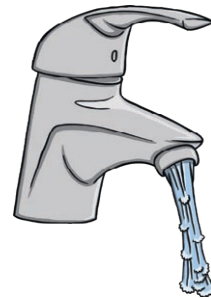
# Animals Including Humans



**exercise**



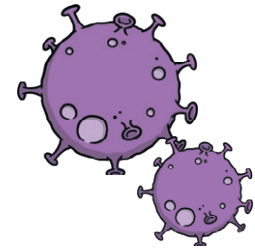
**air**



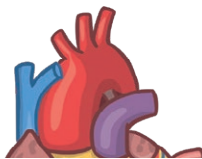
**water**



**food**



**germs**





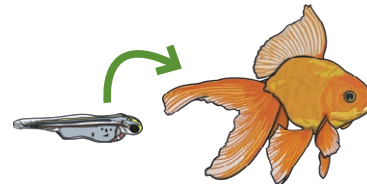
S



**adult**



**young**



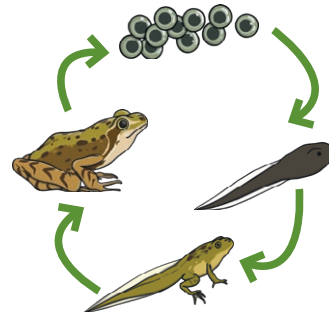
**develop**



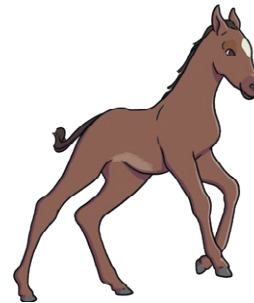
**grow**



**survival**



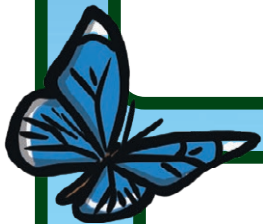
**life cycle**



**live young**



**offspring**

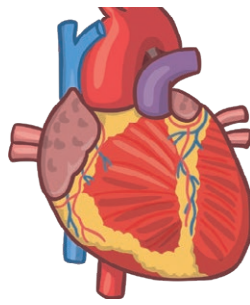


**compare**





**hygiene**



**heart rate**



**nutrition**



**healthy**





compare  
observe  
sort



# Animals Including Humans



 exercise	 air	 water	 food	 germs
 hygiene	 heart rate	 nutrition	 healthy	

 adult	 young	 develop	 grow
 survival	 life cycle	 live young	 offspring

 compare observe sort
--------------------------------



# Animals Including Humans

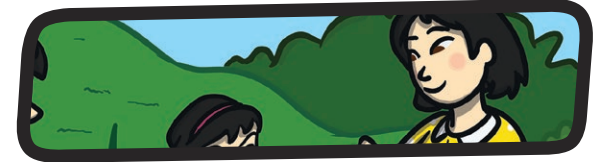
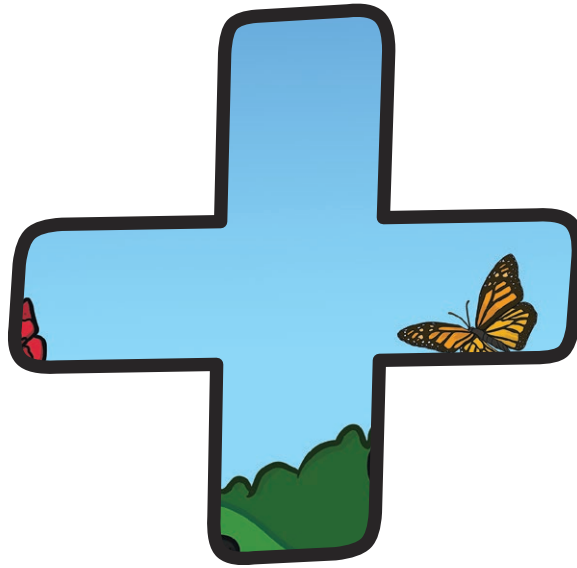
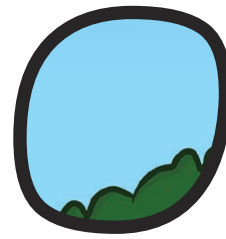
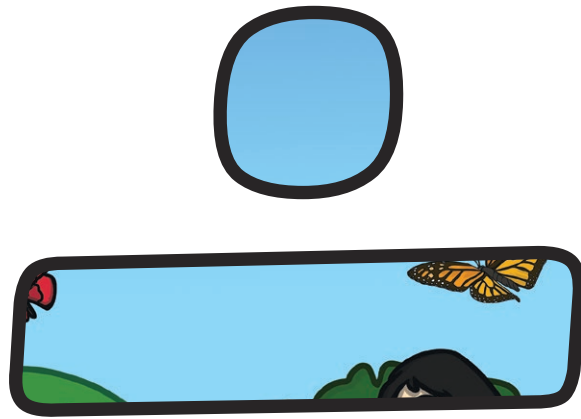


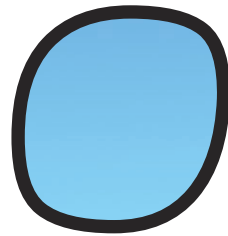
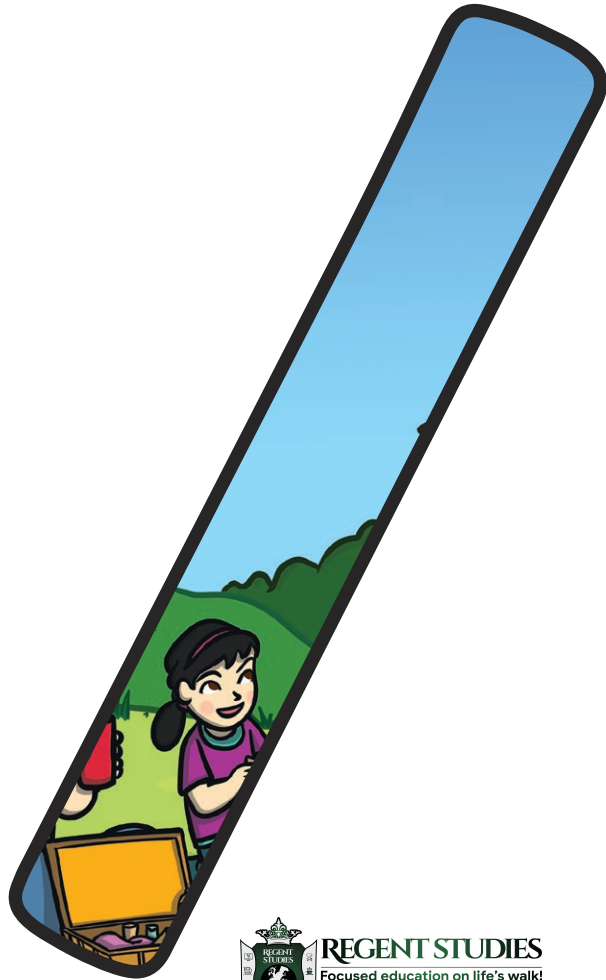
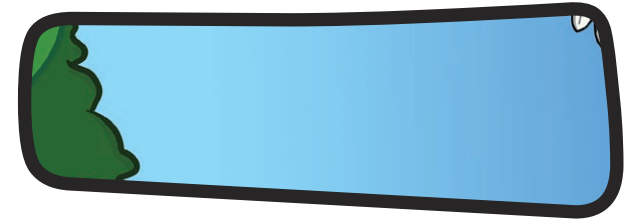
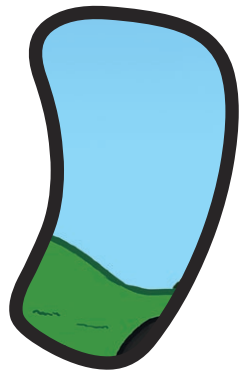
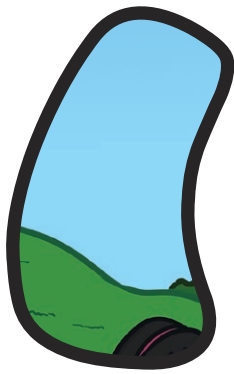
 exercise	 air	 water	 food	 germs
 hygiene	 heart rate	 nutrition	 healthy	

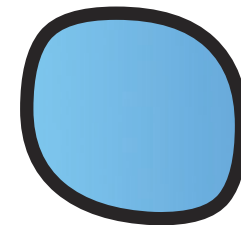
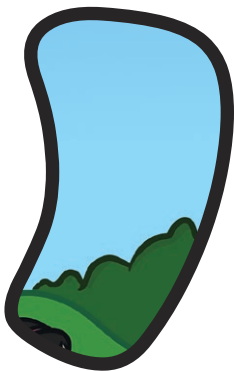
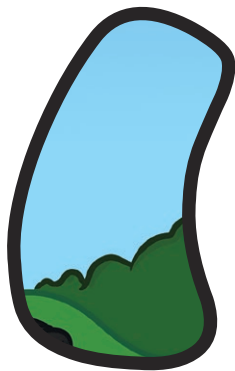
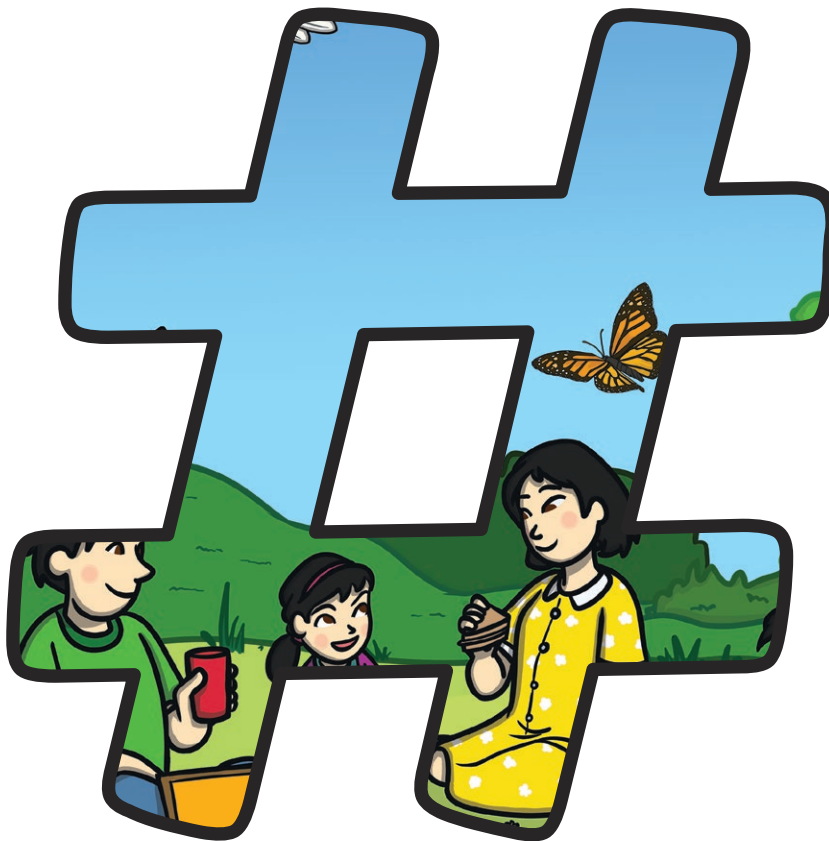
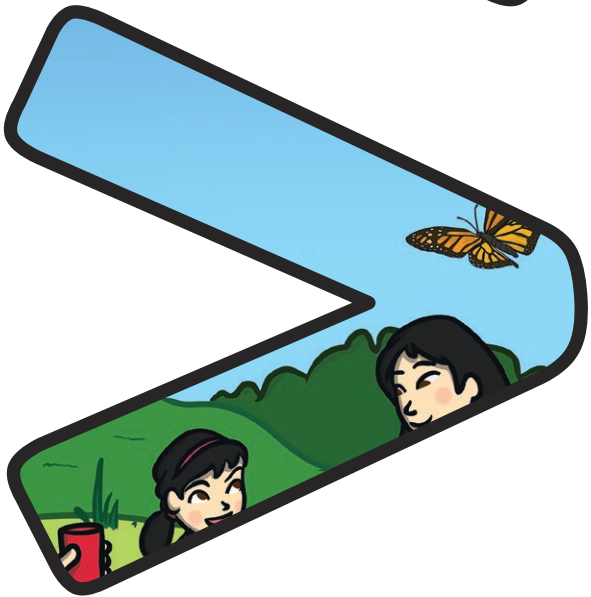
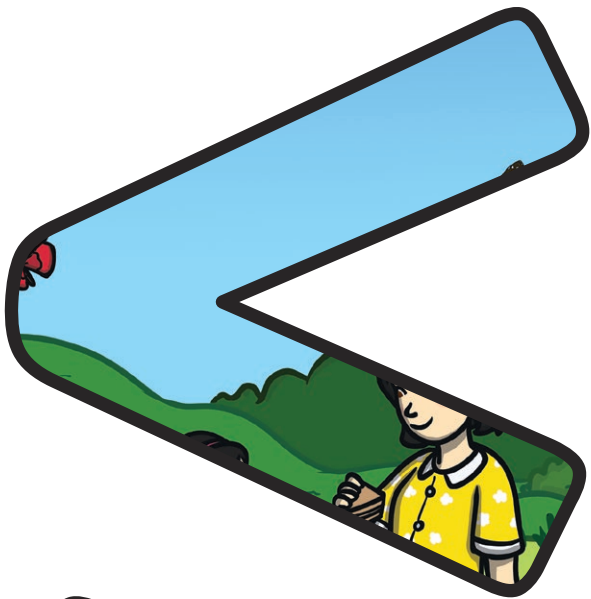
 adult	 young	 develop	 grow
 survival	 life cycle	 live young	 offspring

 compare	observe
sort	

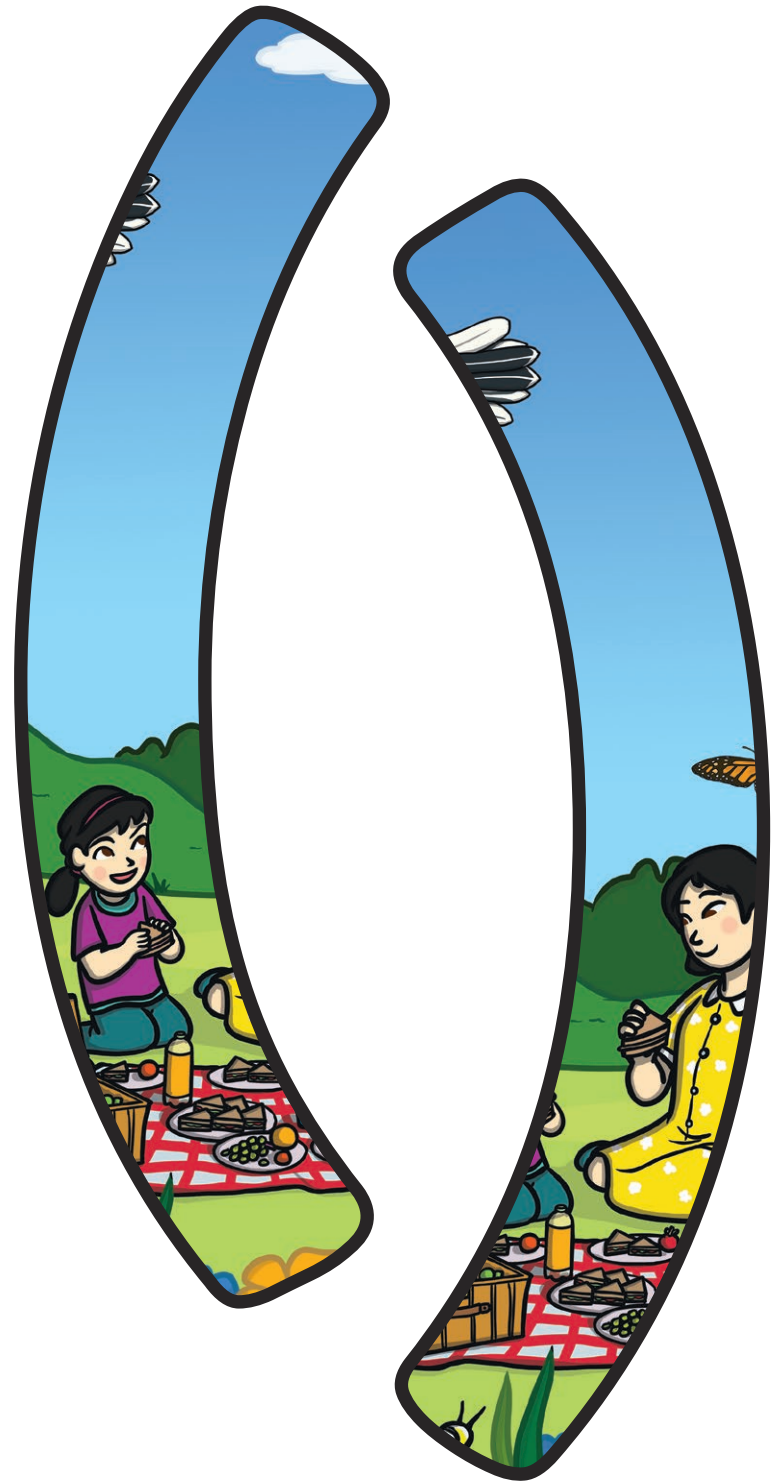


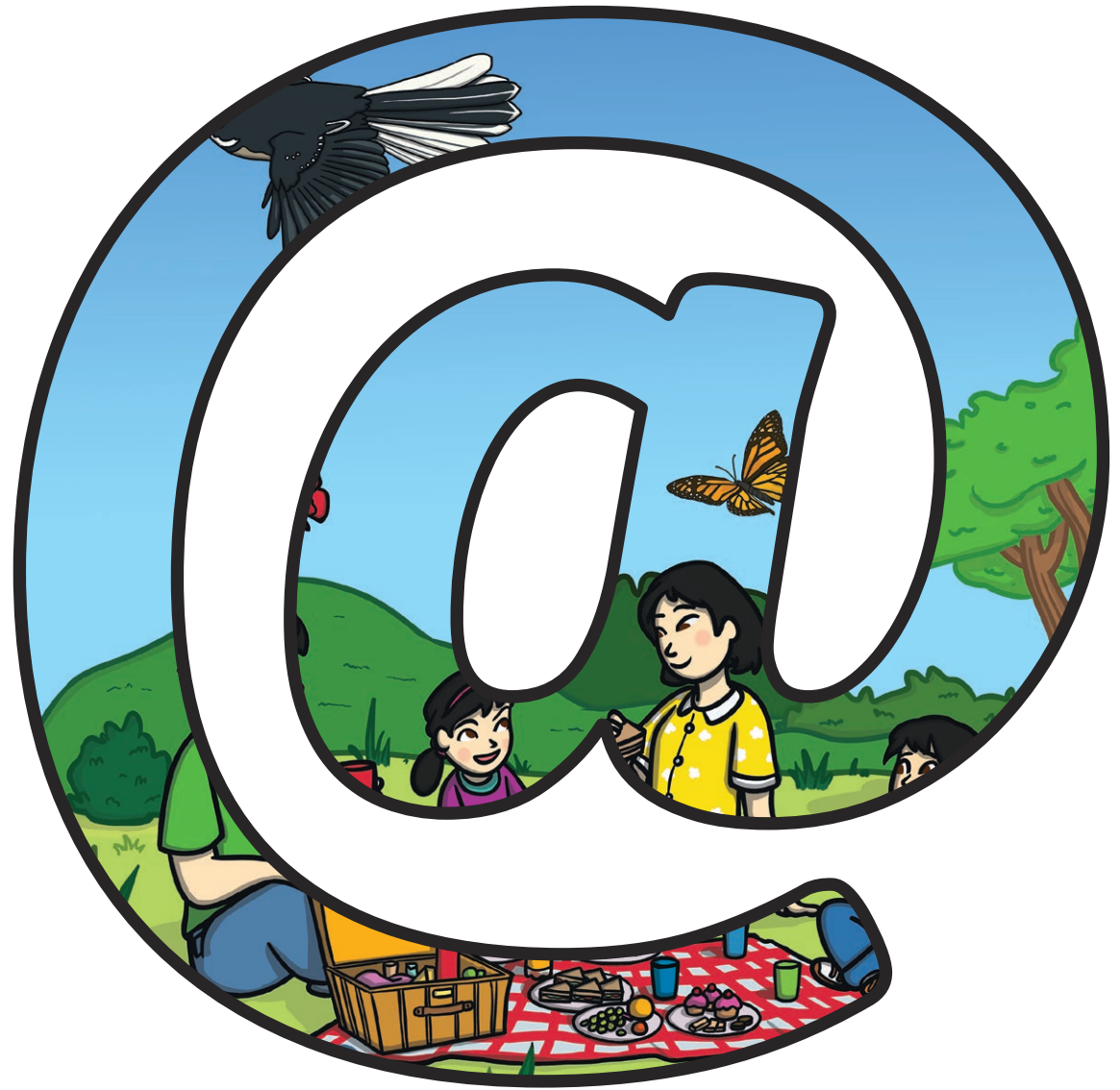








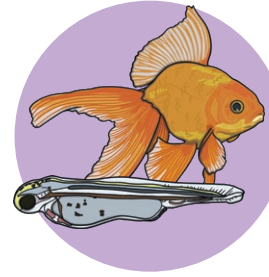




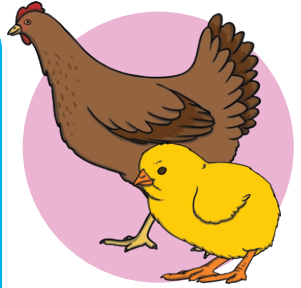
# Animals Including Humans Fact Cards



## Animals Including Humans Fact Cards



The word 'offspring' means 'the child of an animal'.



## Animals Including Humans Fact Cards

Some animals give birth to live young.



## Animals Including Humans Fact Cards

Some animals lay eggs which their young hatch from.



Animals Including Humans Fact Cards

Some offspring look like their adults when they are born.



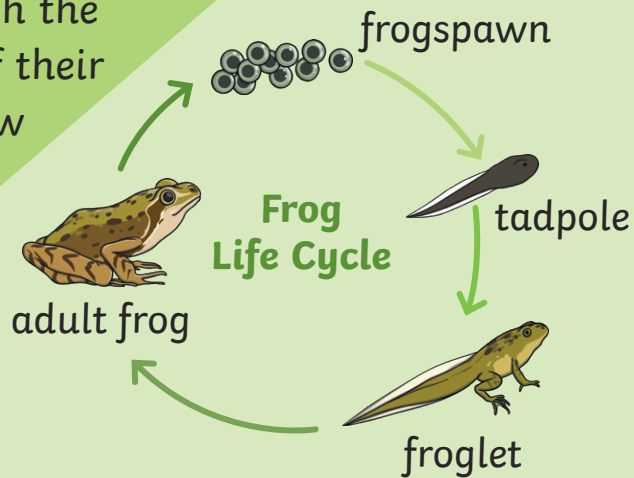
Animals Including Humans Fact Cards

Some offspring do not look like their adults when they are born.



Animals Including Humans Fact Cards

All young animals change as they go through the different stages of their life cycle and grow into adults.

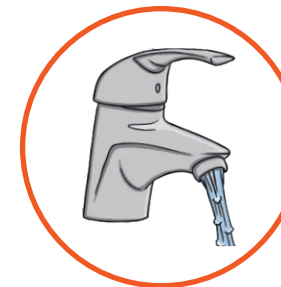


Animals Including Humans Fact Cards

To stay alive, all animals have three basic needs for survival: air, water and food.



air



water



food

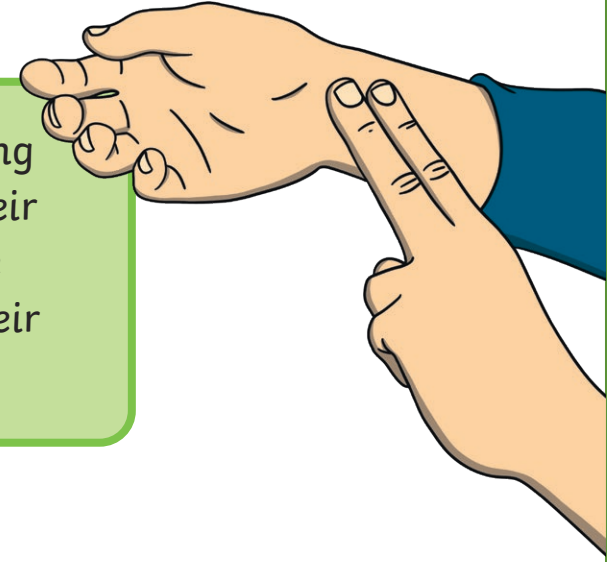
Animals Including Humans Fact Cards

To grow into a healthy adult, we must exercise and eat the right types of food in the right amounts.



Animals Including Humans Fact Cards

A person's beating heart creates their pulse. This pulse can be felt in their neck and wrist.



Animals Including Humans Fact Cards

To stop germs from spreading, it is important to try to be hygienic by keeping ourselves clean.

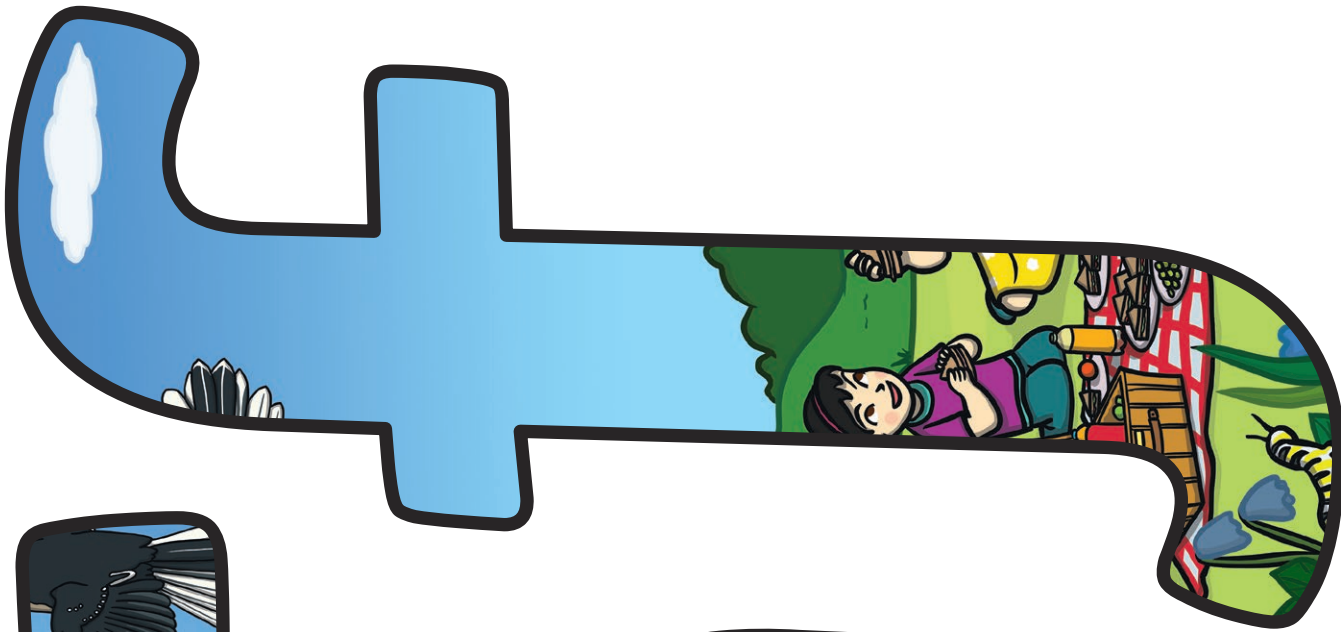


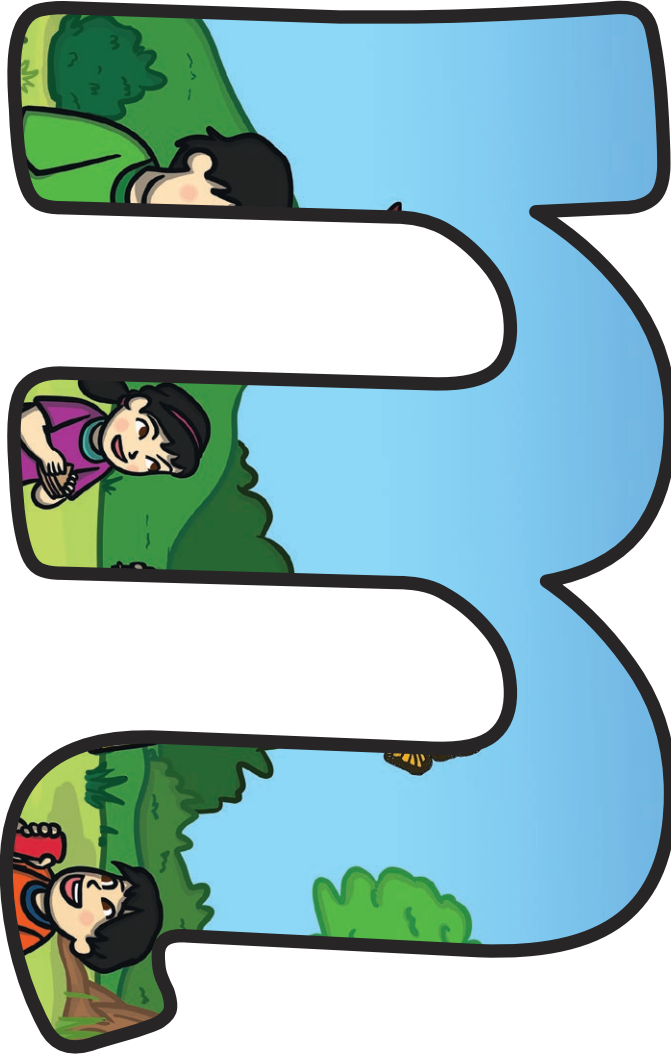
Animals Including Humans Fact Cards

Washing our hands with soap and water for at least 20 seconds helps to stop the spread of germs.

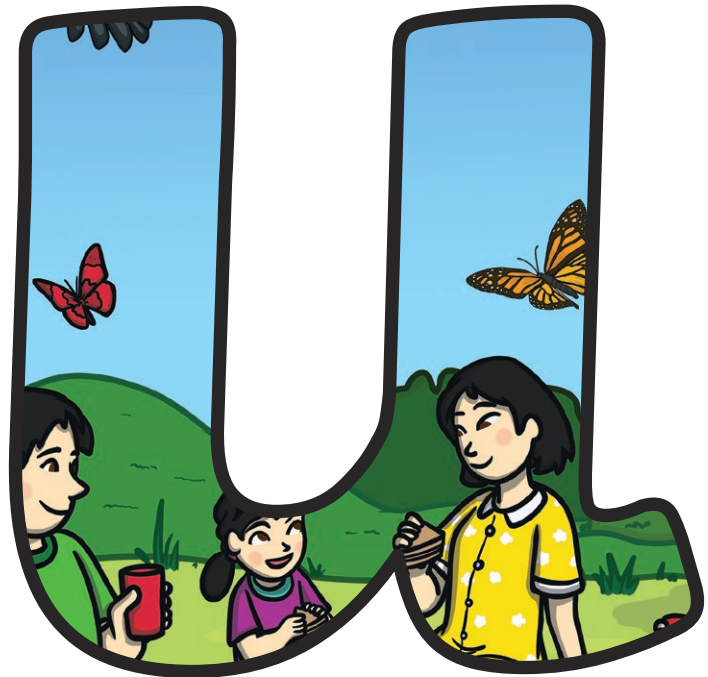
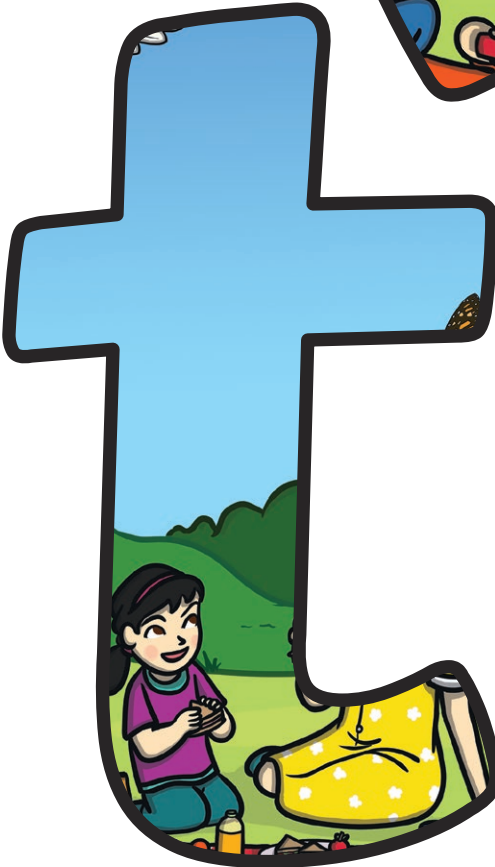




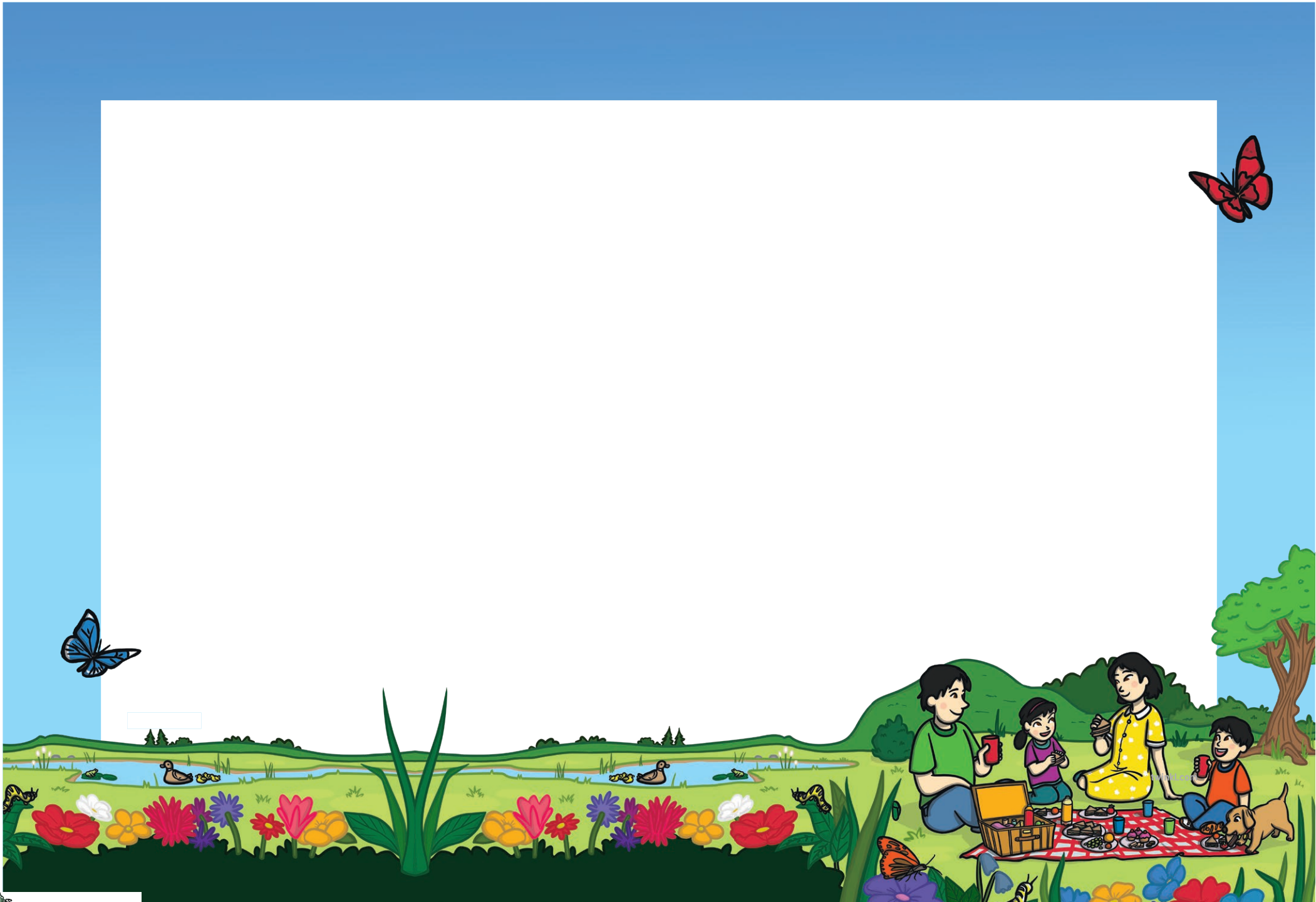


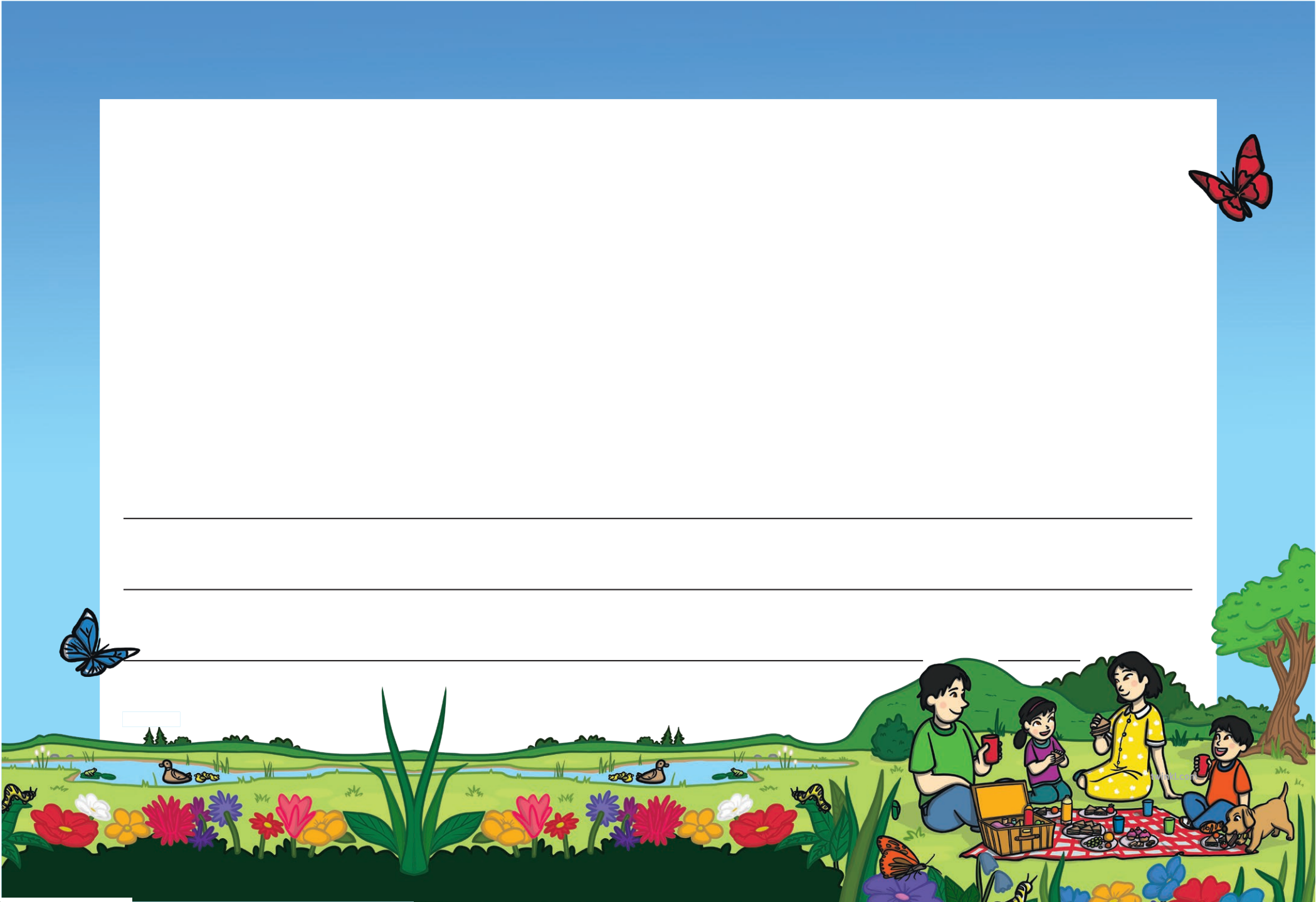


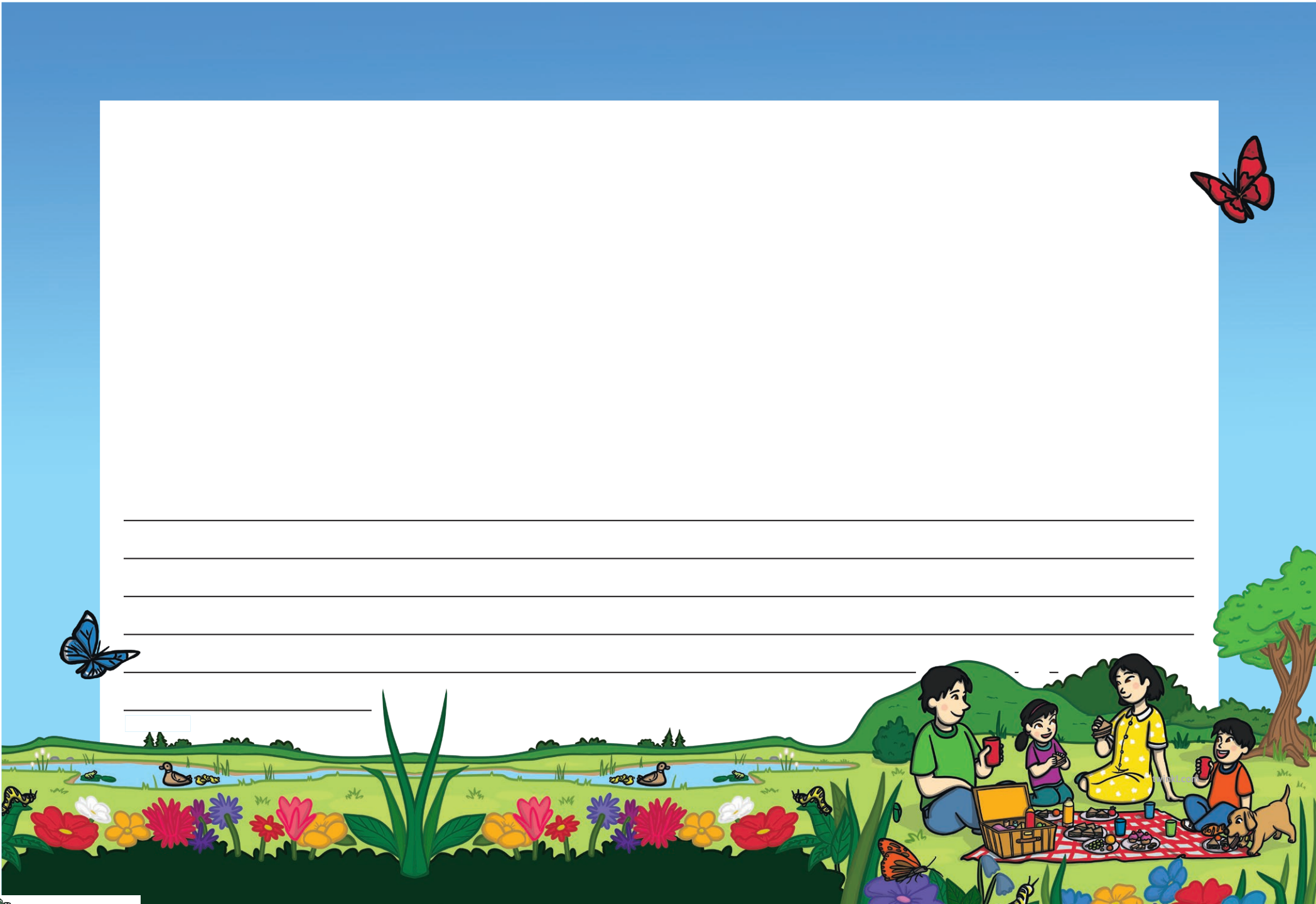














A large white rectangular area with horizontal lines for writing, set against a blue background. The lines are evenly spaced and extend across most of the width of the page.





---

---

---

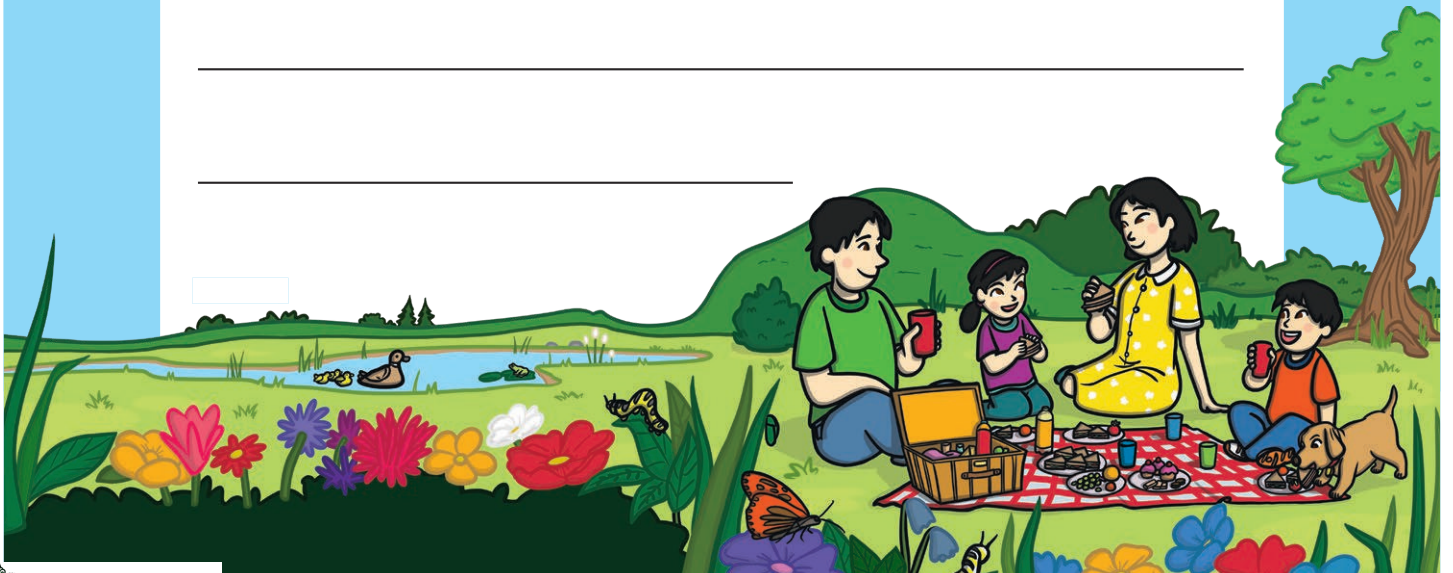
---

---

---

---

---











Can you name an animal whose offspring **do not** look like their adult when they are born?

Can you name an animal whose offspring **do** look like their adult when they are born?

What are the main stages of the frog life cycle?

What are the main stages of the human life cycle?

How does a lamb change as it develops into an adult sheep?

What are the three basic needs of animals for survival?

Which different food groups are found on the Eatwell Guide?

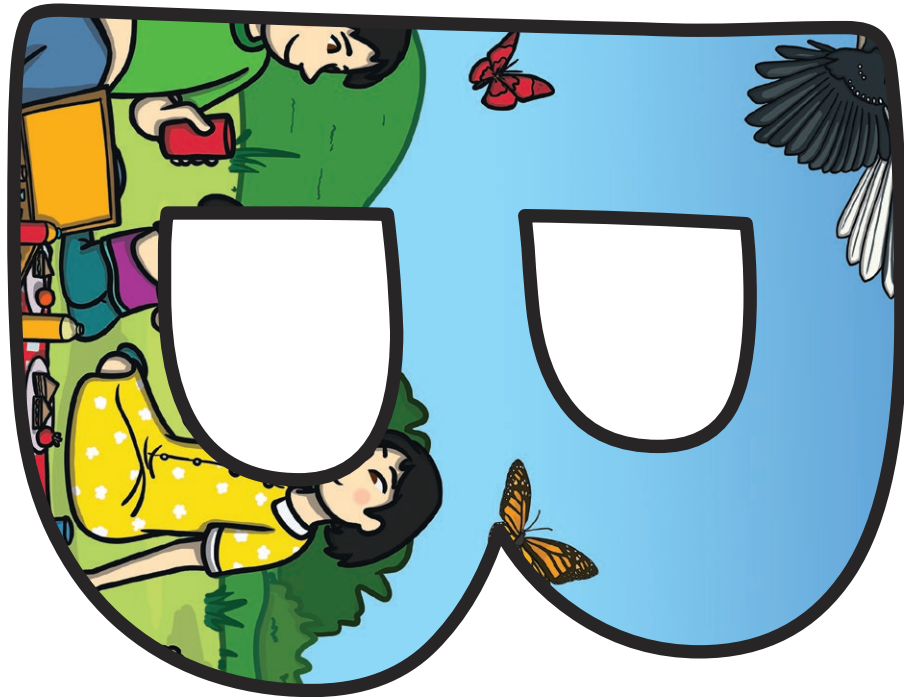
What could you have for a healthy breakfast?

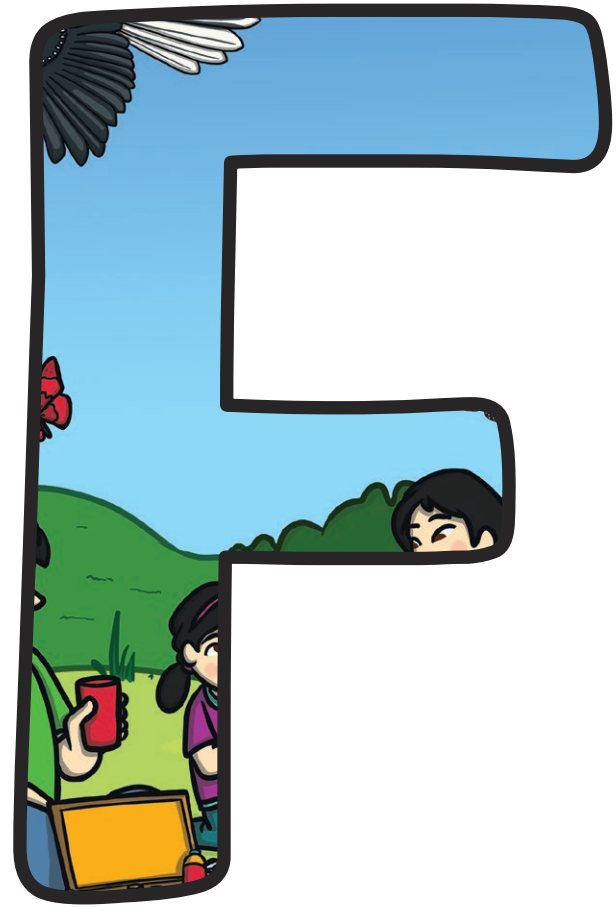
Why should we wash our hands carefully?

Why is it important that we exercise?

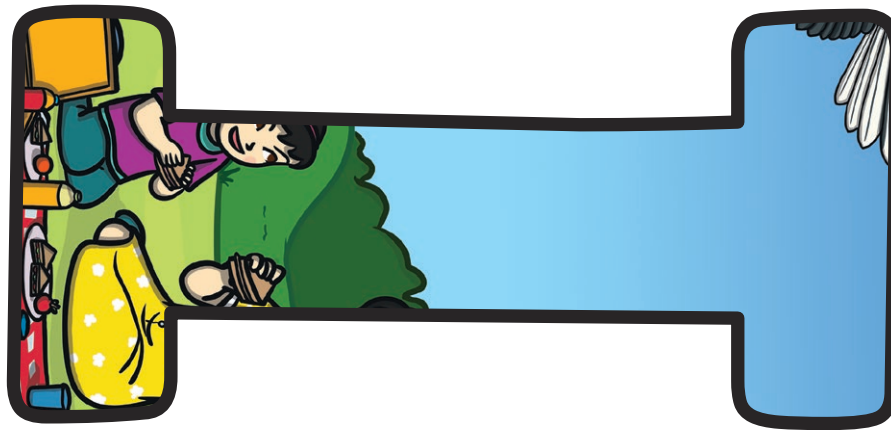
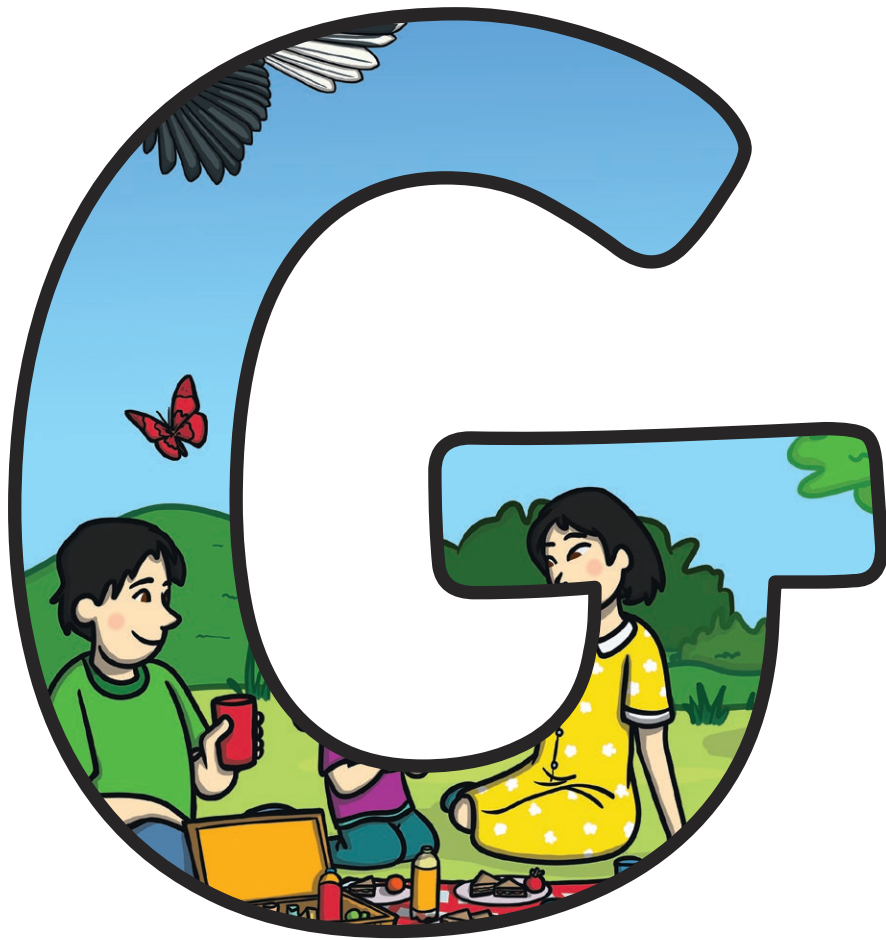
Can you name five different types of exercise?

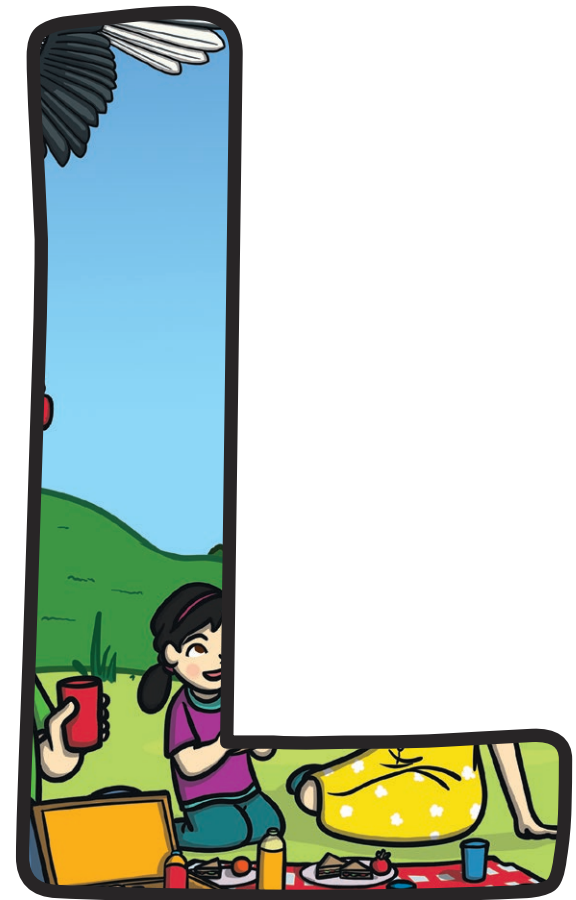
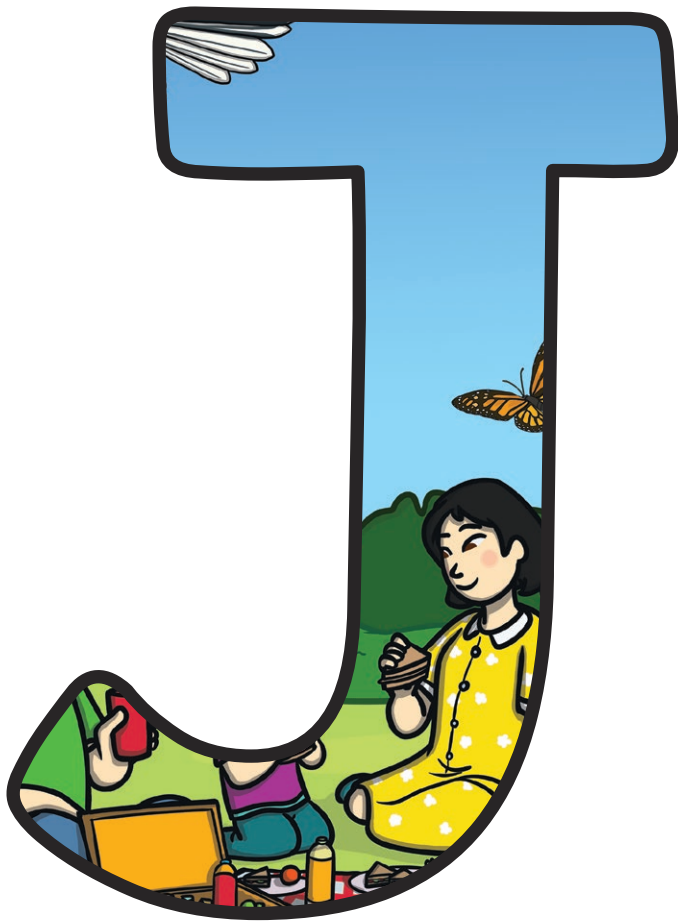
What would you notice happening to your body if you did star jumps for two minutes?





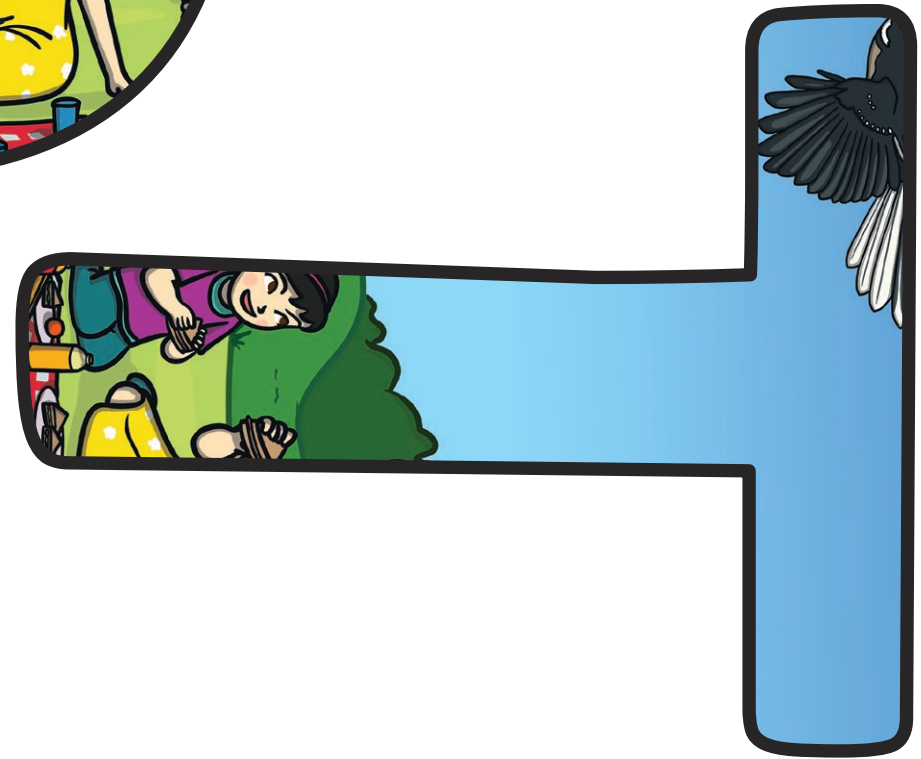




















**adult**

**develop**

**life cycle**

**grow**



**survival**

**offspring**

**young**

**live young**



**exercise**

**germs**

**hygiene**

**nutrition**



**air**

**water**

**food**

**healthy**



**heart rate**

**sort**

**compare**

**observe**






# Animals Including Humans




s w a t e r t d h  
u a d u l t g e e  
r g r t f s y v a  
v e g r o w o e l  
i r h t o y u l t  
v m e g d f n o h  
a s n a i r g p y  
l e x e r c i s e  
l i f e c y c l e



adult  
develop  
life cycle  
grow

young  
exercise  
germs  
food

air  
water  
healthy  
survival



# Animals Including Humans **Answers**

